



Maine ANALYTICAL

146 Brunswick Rd, Richmond,
Maine 04357
207-951-9000
maineanalytical@gmail.com

Cannabinoid Potency Certificate of Analysis

Sample ID: 072621a2

Date: 27-Jul-21, 10:02:59

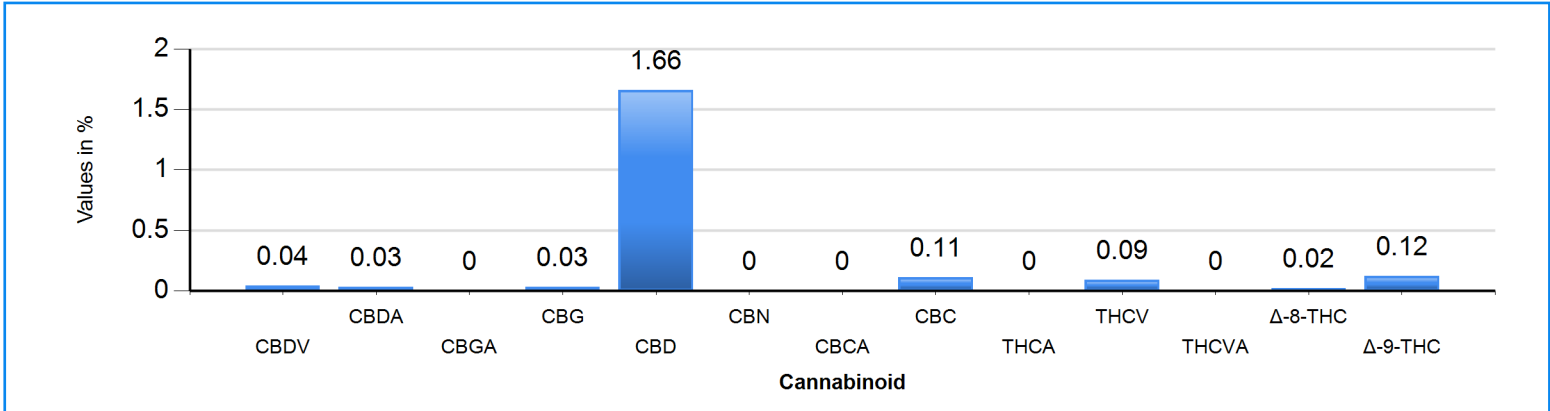
Client: Merry Meeting Bay Hemp Co

Sample: 72521MBMO4

Type: Massage Oil

Notes: N/A

Cannabinoid Profile



Cannabinoid	Result (%)	Result (mg/g)
CBDV (Cannabidivarin)*	0.04	0.4
CBDA (Cannabidiolic Acid)*	0.03	0.3
CBGA (Cannabigerolic Acid)*	0	0
CBG (Cannabigerol)	0.03	0.3
CBD (Cannabidiol)	1.66	16.6
CBN (Cannabinol)	0	0
CBCA (Cannabichromenic Acid)*	0	0
CBC (Cannabichromene)*	0.11	1.1
THCA (Tetrahydrocannabinolic Acid)	0	0
THCV (Tetrahydrocannabivarin)*	0.09	0.9
THCVA (Tetrahydrocannabivarinic Acid)	0	0
Δ-8-THC (Δ-8-tetrahydrocannabinol)	0.02	0.2
Δ-9-THC (Δ-9-tetrahydrocannabinol)	0.12	1.2
Total CBD (CBD+CBDA)	1.69	16.9
Max CBD **	1.69	16.86
Total THC (THC+THCA)	0.12	1.2
Max THC **	0.12	1.2
Total Cannabinoid Results	2.1	21



Approved By 

Date & Time 7/27/2021 5:29:19 PM

- **Maine Analytical Strives to exceed standards. Samples are tested in duplicate on validated methods, calibrated with Certified Reference materials to ISO 17025 Standards.**
- **Maine Analytical is dedicated to the ISO 17025 Standard and is Pending accreditation with Perry Johnson Laboratory Accreditation INC.**
- Liquid samples are tested by weight for accuracy. MCT and most oil tinctures are 0.95 grams/ml
- %=(W/W)=Percent(Weight of Analyte/Weight of Product)
- Total Cannabinoid Results are the sum of all cannabinoids detected.
- Maximum Potential THC and CBD is calculated to account for the loss of the carboxyl group during the common decarboxylation step.
- ** Max Potential THC = Total THC+ (Total THCA x .877)
- ** Max Potential CBD = Total CBD+ (Total CBDA x .877)
- Analytes Marked with * do not meet ISO 17025 standards because these analytes have their calibration verified by only one company's certified reference standards.
- Analytes not marked with * meet ISO 17025 standards because they are verified by two different companies certified reference standards every day testing takes place.

